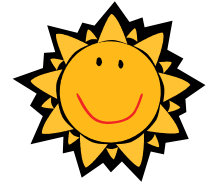


Welcome to Washington International School

2017 SUMMER SCHOOL

We offer two kinds of programs in summer
华盛顿国际学校 两种暑期班



Academic Lessons

学术性课程

Group lessons meet once a week. Private lessons are unlimited.

- English reading 英文阅读
- English writing 英文写作
- SAT / ACT prep 大学入学加强班
- Math 数学
- ESL 英文入门



These lessons are offered in our school year round, at both Seattle and Bellevue locations. During summer, however, they are only available at our Seattle campus on Saturdays and Thursdays. Both group and private lessons are available.

- Grade: K – 12
- Date: July 6th – August 26th (8 weeks)
- Time: Check school website for each specific lesson
- Tuition: Check school website for details

Complete information, such as schedule and tuition, are listed at school website www.WashingtonInternationalSchool.com.

这些课程全年进行，学校网站有完整资料。此处不另述。

Bilingual Summer Camp

快乐双语暑期班

Monday through Friday, choose full time or part time

1). School age students (ages 6 – 10):

Lessons are Chinese language and culture related. All levels are welcome! In addition to Chinese reading and writing, children will have fun everyday with our exciting activities such as stories, arts and crafts, games, music, drama, dance, and parties. Our goal is not just learning Chinese, but to make learning Chinese enjoyable! Besides Chinese lessons, English reading, writing, and math will also be offered to sharpen up the students' academic skills, so they will be prepared for the new school year after summer!

- ❖ **Music, Art, & Chinese Kung Fu** classes taught by specialty teachers are offered with additional tuition (ea. \$70/mo).
- ❖ **Age 10 and above** usually achieve better learning result by taking our private lessons (\$500 for 20 lessons).

2). Preschoolers (ages 3 - 5):

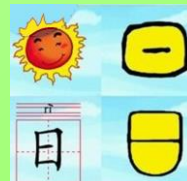
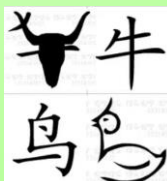
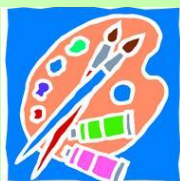
Most lessons and activities are in Chinese. Teachers will provide any necessary translation to new children to help them understand the lessons. No Chinese language background is needed prior to enrollment. It is an excellent program not only for learning Chinese, but also for building a solid foundation for kindergarten. Math, science, and language art are a part of the program. Lessons are very fun. Crafts, music, stories and other activities are intergraded into daily lessons.

- ❖ **Music, Art, & Gymnastic** classes taught by specialty teachers are offered at additional \$70/mo.

3). Toddlers (ages 1 – 2):

Children at this age are especially gifted with their sensitive hearing and ability to imitate. They've just passed the paralinguistic stage - now is the best time to pick up a language! This is a fun program filled with songs, play, friends, and laughter. Children will be immersed in our Chinese-English environment, naturally pick up both languages, and surprise you with their amazing language ability!

- ❖ Children entering the Toddler Program must be able to walk steadily, feed themselves, follow basic instructions, and understand boundaries that are set before them.



All the information below is for Bilingual Summer Camp

下面全部资料皆为 《快乐双语暑期班》

Date (日期):

Our summer camp is held Monday through Friday. You can choose any weeks or days

- Week-0: 6/19 - 6/23
- Week-1: 6/26 - 6/30
- Week-2: 7/3 - 7/7 (no camp on 7/4)
- Week-3: 7/10 - 7/14
- Week-4: 7/17 - 7/21
- Week-5: 7/24 - 7/28
- Week-6: 7/31 - 8/4
- Week-7: 8/7 - 8/11
- Week-8: 8/14 - 8/18
- Week-9: 8/21 - 8/25
- Week-10: 8/28 - 9/1



快乐双语暑期班欢迎您！

Locations (两个地点均交通极为方便):



1). 4228 Factoria Blvd SE Bellevue



2). 1201 N 145th St. Seattle

Daily Schedule (每天日程):

School Age Students (Ages 6 - 10)	Preschool Students (Ages 3 - 5)	Toddler Students (Ages 1 - 2)
Morning	Morning	Morning
7:30 - 9:00 Before-camp care	7:30 - 9:00 Before-camp care	7:30 - 9:00 Before-camp care
9:00 - 9:30 Drop-off time	9:00 - 9:30 Drop-off time	9:00 - 9:30 Drop-off time
9:30 - 10:30 Lesson-One	9:30 - 10:00 Circle time	9:30 - 10:00 Circle / Lesson
10:30 - 11:00 Recess	10:00 - 10:30 Small group lesson	10:00 - 10:30 Snacks
11:00 - 12:00 Lesson-Two	10:30 - 11:30 Learning centers	10:30 - 11:30 Outdoor play
12:00 - 12:45 Lunch	11:30 - 12:15 Outdoor play	11:30 - 12:15 Learning centers
12:45 - 1:00 Pick-up time	12:15 - 12:45 Lunch	12:15 - 12:45 Lunch
	12:45 - 1:00 Pick-up time	12:45 - 1:00 Pick-up time
Afternoon	Afternoon	Afternoon
1:00 - 2:00 Rest / Drop-off	1:00 - 2:00 Nap (or drop-off)	1:00 - 2:00 Nap (or drop-off)
2:00 - 3:00 Lesson-Three	2:00 - 3:00 Nap (or lesson)	2:00 - 3:00 Nap (or play)
3:00 - 4:00 Recess and snacks	3:00 - 4:00 Snacks & play	3:00 - 4:30 Snacks & play
4:00 - 4:40 Lesson-Four	4:00 - 4:40 Small group lesson	4:30 - 4:40 Circle time
4:40 - 5:00 Pick-up time	4:40 - 5:00 Pick-up time	4:40 - 5:00 Pick-up time
5:00 - 6:30 After-camp care	5:00 - 6:30 After-camp care	5:00 - 6:30 After-camp care

Tuition (学费 - 请注意提前缴费和临时缴费的不同费率) –

- Tuition covers lunch and snacks. It also covers breakfast for before-camp students.
- Advanced students may join older students' class, but it doesn't change the tuition rate. The tuition rate is strictly based on the student's own age.
- The following fees are for new students only. Students from our preschool stay with their regular fee schedule.

若提前 10 天以上缴费 Payment at least 10 days in advance			For example, tuition for Week-3 must be paid on or before the Friday (4 pm) of Week-1, in order to be at this rate.							
Ages 6 – 10 Rate applied after 6 th birthday			Ages 3 – 5 After 3 rd birthday		Ages 2 Or not toilet trained		Ages 1 Must be able to walk			
	Weekly	Daily	Weekly	Daily	Weekly	Daily	Weekly	Daily		
Full day (9:00 - 5:00):	\$230	\$70	\$280	\$90	\$310	\$100	\$340	\$110		
Morning (9:00 - 1:00):	\$175	\$50	\$210	\$60	\$230	\$70	\$250	\$80		
Afternoon (1:00 - 5:00):	\$145	\$45	\$170	\$50	\$180	\$60	\$200	\$70		
Before-camp (8:15 - 9:00):	\$15	\$5	\$20	\$8	\$25	\$9	\$30	\$10		
Before-camp (7:30 - 9:00):	\$30	\$10	\$40	\$16	\$50	\$18	\$60	\$20		
After-camp (5:00 – 5:45):	\$15	\$5	\$20	\$8	\$25	9	\$30	\$10		
After-camp (5:00 – 6:30):	\$30	\$10	\$40	\$16	\$50	\$18	\$60	\$20		
若没有提前 10 天以上缴费 Payment less than 10 days in advance			For example, after Friday 4 pm of Week-1, tuition for Week-3 will be at the rate below.							
Full day (9:00 - 5:00):	\$250	\$80	\$300	\$100	\$330	\$110	\$360	\$120		
Morning (9:00 - 1:00):	\$190	\$60	\$230	\$75	\$250	\$85	\$270	\$95		
Afternoon (1:00 - 5:00):	\$160	\$55	\$190	\$65	\$200	\$75	\$220	\$85		
Before-camp (8:15 - 9:00):	\$20	\$8	\$25	\$9	\$30	\$10	\$35	\$11		
Before-camp (7:30 - 9:00):	\$40	\$16	\$50	\$18	\$60	\$20	\$70	\$22		
After-camp (5:00 – 5:45):	\$20	\$8	\$25	\$9	\$30	\$10	\$35	\$11		
After-camp (5:00 – 6:30):	\$40	\$16	\$50	\$18	\$60	\$20	\$70	\$22		

Special Discount And Other Fees (各种折扣及费用):

- 5% Early Bird tuition discount for payments before April 8, 2017. It doesn't apply to before / after camp care or other fees.
- 5% discount for additional children from the same family attending the same week (applied to the lower tuition). It doesn't apply to before / after camp care or other fees.
- 15% discount is given to all fees for week-2 due to Independence Day (no school on 7/4).
- \$35 non-refundable registration fee for each child. This fee is waived if registration is done at our open house. Please see open house dates on next page.
- When tuition has been paid for 9 full weeks, the 10th week will be free! The free week will be full-day if the student has been full-day for the entire 9 weeks; otherwise the free week will be half-day. This free offer doesn't apply to before / after camp care or other services.
- A \$10 processing fee is charged for each payment after June 23, 2017.
- Art, Music, and Gymnastic lessons are available at additional cost. Each is \$70 per month (4 lessons). These lessons never have any discount, but can be prorated if you are not attending a full month.

Scheduled payments (学费一次缴清, 但可分期兑现) –

Full tuition is due at time of registration. When registering for 5 weeks or more, we can accept two checks instead of one. The 2nd check will cover your 6th week and after; we won't deposit it until 10 days before the session starts.

For example, if you are registering for week-1 through week-7, we can accept 2 checks. The first check covers week-1 through week-5. The 2nd check covers week-6 and week-7. We won't the deposit the 2nd check until the Friday of week-4.

Refund/credit policy (退款/补课规章) –

Tuition refund/credit is available if a written notice is received by WIS at least 10 days before the weekly session starts. No refunds/credits will be issued if WIS does not receive this 10-day notice. Refund will be mailed by Sept. 15, 2017.

For example, in order to get a refund or credit for any day in week-3, a written notice must be received by WIS no later than the Friday of week-1.

Lunch and Snacks (早餐、午餐和点心) -

- Nutritious lunch is served around noon. Each meal contains meat, dairy, grain, and vegetable or fruits. Menu is posted in school. Students are welcome to bring their own food. Tuition is the same.
- Snack is served in the afternoon; and also in the mid-morning for children below age 5.
- Cereal / waffle / pancake and milk are available for before-camp students.
- Our camp is peanut free. For other allergies, intolerance, preference, or religious concerns, parents are responsible to bring their own food for their children. We are unable to provide substitute food. Tuition is the same, whether the child eats school food or not.

Sample Lunch Menu

Monday: Baked chicken with steamed rice and vegetables, plus milk
Tuesday: Hawaiian pizza, with watermelon afterward
Wednesday: String bean beef with steamed rice, plus milk
Thursday: Chinese pot stickers filled with pork and cabbage, plus milk
Friday: Meatball pasta with mushroom, served with milk



Open House (对外开放参观日) -

It is very important to print the directions from www.washingtoninternationalschool.com/locations and take it with you when coming to our open house. Directions are not available by phone.

Seattle Site

Camp is at 1201 N 145th Street
But open house is at 12345 Roosevelt Way NE

Following Saturdays, at 2 - 4 pm

Jan. 14, 21, & 28	Apr. 1, 8, & 29
Feb. 4, 11, & 18	May 6, 13, 20, & 27
Mar. 4, 11, & 18	Jun. 3, & 10

Bellevue Site

4228 Factoria Blvd. SE
Downstairs of St. Margaret's Church

Following Tuesdays
at 5-7 pm

1/10, 3/14, 4/4, & 6/6

Following Wednesdays
at 5-7 pm

1/11, 3/15, 4/5, & 6/7

- If you missed the open house, you are welcome to email info@WashingtonInternationalSchool.com to book a special appointment, but the registration fee is only waived at open house.
- You are welcome to come to our Seattle open house to register for Bellevue camp, or come to our Bellevue open house to register for Seattle camp, if the schedule works better for you this way.

Registration (如何注册) -

Space is limited and on a first come, first serve basis. We accept check or cash. Sorry, we don't accept credit cards. Here are 3 ways to register:

1. **Come to an open house to register - the \$25 registration fee will be waived!**
2. Come to our Seattle site (1201 N. 145th St.) or Bellevue site (4228 Factoria Blvd. SE) to register. Our office hours are 9 am – 4 pm on weekdays. Appointment booked via email is highly recommended for efficient service.
3. Download registration form at <http://www.washingtoninternationalschool.com/pub/registration.general.pdf> and mail it in with appropriate fees. If you choose this way, please don't calculate fees on your own. Please email info@WashingtonInternationalSchool.com to request a fee calculation. You can also request registration form if you have trouble to download it. Our mailing address is:

WIS (2017 summer)
P.O. Box 77804
Seattle, WA 98177

Need more info (您需要更详细的资料吗)? -

Please email info@WashingtonInternationalSchool.com.

