

2021

Welcome to Washington International School

Bilingual Summer Camp

华盛顿国际学校 快乐双语暑期班



Introduction (简介)

Monday through Friday, choose full time or part time



1). School age students (ages 6 – 10):

Lessons are Chinese language and culture related. All levels are welcome! In addition to Chinese reading and writing, children will have fun everyday with our exciting activities such as stories, arts and crafts, games, music, drama, dance, multicultural cooking projects and parties. Our goal is not just learning Chinese, but to make learning Chinese enjoyable!

❖ **Music** lessons taught by specialty teachers are offered at additional \$20/week each at our Seattle site.

2). Preschoolers (ages 3 - 5):

The summer camp for this age group is Chinese-English bilingual. It is an excellent program not only for learning Chinese, but also for building a strong foundation for kindergarten. In addition to Chinese lessons, the program offers math, science, and language arts (English). Lessons are very fun! Crafts, music, stories, games, and performance arts are intergraded into daily activities. No Chinese language background is needed prior to enrollment. Teachers will provide any necessary translation to new children to help them understand the lessons. Students will proudly present a stage show in August. Families and friends are all invited!

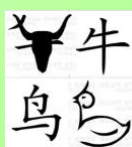
❖ **Music** lessons taught by specialty teachers are offered at additional \$20/week each at our Seattle site.

3). Toddlers (ages 1 – 2):

Children at this age are especially gifted with their sensitive hearing and ability to imitate. They've just passed the paralinguistic stage - now is the best time to pick up a language! This is a fun program filled with songs, play, friends, and laughter. Children will be immersed in our Chinese-English environment, naturally pick up both languages, and surprise you with their amazing language ability!

❖ Children entering the Toddler Program must be able to walk steadily, feed themselves, follow basic instructions, and understand boundaries that are set before them.

❖ **Music** lessons taught by specialty teachers are offered at additional \$20/week each at our Seattle site.



Location:

1201 N. 145th Street Seattle 98133

- Easy access to I-5 and H99
- Large playground
- Bright classrooms
- Super clean facility
- Hot lunch provided



Date (日期):

Our summer camp is held Monday through Friday. You can choose any weeks or days.

- Week-0: 6/14 – 6/18
- Week-1: 6/21 - 6/25
- Week-2: 6/28 - 7/2
- Week-3: 7/6 - 7/9 (no camp on 7/5)
- Week-4: 7/12 - 7/16
- Week-5: 7/19 - 7/23
- Week-6: 7/26 - 7/30
- Week-7: 8/2 - 8/6
- Week-8: 8/9 - 8/13
- Week-9: 8/16 - 8/20
- Week-10: 8/23 - 8/27
- Week-11: 8/30 – 9/3

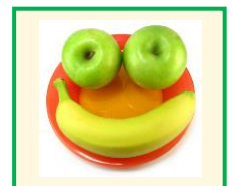
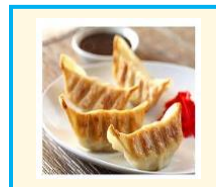


Daily Schedule (每天日程):

School Age Students (Ages 6 - 10)	Preschool Students (Ages 3 - 5)	Toddler Students (Ages 1 – 2)
<p style="text-align: center;">Morning</p> <p>7:30 - 9:00 Before-camp care 9:00 - 9:30 Drop-off time 9:30 - 9:45 Morning reading 9:45 – 10:45 Lesson-One 10:45 - 11:15 Outdoor fun 11:15 – 12:15 Lesson-Two 12:15 - 12:45 Lunch 12:45 - 1:00 Pick-up time</p> <p style="text-align: center;">Afternoon</p> <p>1:00 - 2:00 Rest / play 2:00 - 3:00 Lesson-Three 3:00 - 4:00 Snacks & recess 4:00 - 4:40 Lesson-Four 4:40 - 5:00 Pick-up time 5:00 – 5:45 After-camp care</p>	<p style="text-align: center;">Morning</p> <p>7:30 - 9:00 Before-camp care 9:00 - 9:30 Drop-off time 9:30 - 9:45 Snacks 9:45 - 10:15 Small group lesson 10:15 – 10:45 Outdoor fun 10:45 - 12:15 Learning centers 12:15 - 12:45 Lunch 12:45 - 1:00 Pick-up time</p> <p style="text-align: center;">Afternoon</p> <p>1:00 - 3:00 Nap (or math+play) 3:00 – 3:30 Snacks 3:30 – 4:00 Outdoor fun 4:00 - 4:40 Small group lesson 4:40 - 5:00 Pick-up time 5:00 – 5:45 After-camp care</p>	<p style="text-align: center;">Morning</p> <p>7:30 - 9:00 Before-camp care 9:00 - 9:30 Drop-off time 9:30 - 9:45 Snacks 9:45 - 10:15 Outdoor fun 10:15 – 10:45 Circle time 10:45 - 12:15 Learning centers 12:15 - 12:45 Lunch 12:45 - 1:00 Pick-up time</p> <p style="text-align: center;">Afternoon</p> <p>1:00 - 3:00 Nap 3:00 – 3:30 Outdoor fun 3:30 – 4:30 Snacks & play 4:30 - 4:40 Circle time 4:40 - 5:00 Pick-up time 5:00 – 5:45 After-camp care</p>

Breakfast, Lunch and Snacks (早餐、午餐、和点心) -

- Nutritious lunch is served at noon. Each meal contains meat, dairy, grain, and vegetables/fruits. Menu is posted in school. Students are welcome to bring their own food. Tuition is the same.
- Snacks are served in the mid-morning and mid-afternoon.
- Cereal / waffle and milk are available before 8 am.
- Our camp is peanut free. For other allergies, intolerance, preference, or religious concerns, parents are responsible to bring their own food for their children. We are unable to provide substitute food. Tuition is the same, whether the child eats school food or not.



Sample Lunch Menu	
Monday:	Baked chicken with steamed rice and vegetables, plus milk
Tuesday:	Pasta in mushroom cream, served with sausage and milk
Wednesday:	Stir fried pork and cabbage with Chinese noodles, plus milk
Thursday:	Combination pizza, with watermelon afterward
Friday:	Cheese macaroni with meatballs and vg, served with milk

Virtual Tour (网上参观) –

- Virtual tours are available by appointment between 11 am and 7 pm. The first Zoom meeting is for adults only. Children are welcome to view their summer camp fun facility online after the parent-school meeting is complete. Please send your inquiry to info@WashingtonInternationalSchool.com to book an appointment.
- It is unfortunate that we can't schedule any in-person tour during COVID-19.



Fees and Policies (学费及规则) –

- Space is reserved only with full payment.
- \$35 non-refundable processing fee per payment per child. This fee can't be combined with any other programs.
 - Example-1: if you paid for 9:00-5:00 but later want to add 5:45pm after-camp care, you will be charged for the 5:45pm after-camp care fee plus \$35.*
 - Example-2: if you paid for week-1 but later want to add week-2, you will need to pay this \$35 processing fee again.*
- Advanced students may join older students' class, but it doesn't change the tuition rate. The tuition rate is strictly based on the student's own age.
- 5% discount for additional children from the same family attending the same week (applied to the lower tuition). It doesn't apply to before / after camp care or other fees.
- 15% discount is given to all fees for week-3 due to Independence Day (no school on 7/5).
- The 10th week is FREE, if tuition has been paid for 9 full weeks. The free week is full-day if the previous 9 weeks are all full-day; otherwise the free week is half-day. This free offer doesn't apply to before / after camp care or other services.
- There is no refund, credit, makeup days, time switch, or any kind of fee adjustment under any circumstances after tuition is paid, regardless of when it is paid. Please note now Health Department has stricter health rules due to COVID-19. Students can't come to school if they are sick or need quarantine recommended by CDC guidelines. They may return to the program when at least 24 hours have passed since recovery – defined as no fever without the use of medications and improvement in respiratory signs like cough and shortness of breath; AND at least 10 days have passed since signs first showed up if COVID-19 test is positive or no test (Exception: a student may return to school earlier than the above rules if the student has a doctor's note, stating it is not COVID-19 and it is safe for the student to join school activities). There is no tuition refund or any kind of fee adjustment for students' sick leave and quarantine period.
- The fees below are for new students only. Our preschool students stay with their regular fee schedule.

若于 5 月 10 日前缴费 If paid by 5/10/2021		Music lesson is available at Seattle site, for additional \$20 per week.							
Ages 6 – 8 Rate applied after 6 th birthday			Ages 3 – 5 After 3 rd birthday		Ages 2 Or not toilet trained		Ages 1 Must be able to walk		
	Weekly	Daily	Weekly	Daily	Weekly	Daily	Weekly	Daily	Daily
Full day (9:00 - 5:00):	\$340	\$115	\$390	\$135	\$430	\$145	\$470	\$155	\$155
Morning (9:00 - 1:00):	\$260	\$95	\$300	\$105	\$330	\$115	\$360	\$125	\$125
Afternoon (1:00 - 5:00):	\$230	\$85	\$250	\$95	\$280	\$105	\$310	\$115	\$115
Before-camp (8:15 - 9:00):	\$25	\$9	\$30	\$11	\$35	\$12	\$40	\$13	\$13
Before-camp (7:30 - 9:00):	\$50	\$18	\$60	\$22	\$70	\$24	\$80	\$26	\$26
After-camp (5:00 – 5:45):	\$25	\$9	\$30	\$11	\$35	\$12	\$40	\$13	\$13
若于 5 月 10 日之后缴费 If paid after 5/10/2021		Additional \$20 processing fee, if paying when the week is starting. Music lesson is available at Seattle site, for additional \$20 per week.							
Full day (9:00 - 5:00):	\$380	\$130	\$450	\$150	\$490	\$160	\$530	\$170	\$170
Morning (9:00 - 1:00):	\$300	\$110	\$340	\$120	\$370	\$130	\$400	\$140	\$140
Afternoon (1:00 - 5:00):	\$270	\$100	\$290	\$110	\$320	\$120	\$350	\$130	\$130
Before-camp (8:15 - 9:00):	\$30	\$11	\$35	\$13	\$40	\$14	\$45	\$15	\$15
Before-camp (7:30 - 9:00):	\$60	\$22	\$70	\$26	\$80	\$28	\$90	\$30	\$30
After-camp (5:00 – 5:45):	\$30	\$11	\$35	\$13	\$40	\$14	\$45	\$15	\$15

Registration (如何注册) -

Please download the registration form at <http://www.washingtoninternationalschool.com/pub/registration.general.pdf>, fill out, and email it to info@WashingtonInternationalSchool.com. We will email you the fee calculation accordingly.

After receiving our fee calculation, there are 2 ways for you to pay:

1. Online by Zelle (highly recommended):
 - a) Here is how to do: <https://www.zellepay.com/how-it-works> (Note: Zelle works with any bank).
 - b) Our email for Zelle payment is wisSeattleTuition@gmail.com. This email address is for payments only; not for communication.
 - c) One transaction per child. Please don't mix different children in one transaction.
 - d) Please put a memo to ensure the payment is credited to your child's account: **Child's full name, attending weeks and times**
2. Email info@WashingtonInternationalSchool.com to book an appointment for coming to our site to pay in person. Appointments are available between 7:30 am – 5:00 pm. Per health regulations during COVID, our staff won't be able to have face to face long conversations with visitors. You are welcome to discuss your inquiries with us via email or phone at any time. Please wear a mask and bring the registration form with you when coming to the appointment. We accept check, cash, and Zelle payments. We don't accept credit or debit cards. For cash payment, please bring the exact amount as we don't normally keep cash onsite and our staff won't be able to provide change.

Important Notes (重要注意事项):

1. Please don't calculate the fees on your own.
2. Your child is not registered until we receive the full payment.
3. Space is limited and on a first come, first serve basis.
4. We follow the COVID-19 Safety and Health Guidelines from the State Health Department. All people age 2 and above must wear facial coverings in school. Parents please use your own pens to sign in / sign out and keep at least 6 ft from other families. Sick children need to stay out of school until at least 10 days after symptom onset, AND at least 24 hours after their fever has resolved and symptoms have improved. Travel during COVID-19 is strongly discouraged. If children must travel, they need to stay away from school for at least 10 days after travel or 7 days after travel if they get tested 3-5 days after travel and the result is negative. If a child has had close contact with a COVID case, they need to stay away from school for at least 14 days. Tuition is nonrefundable for sick leaves and quarantine days.
5. Parents are welcome to communicate with us by email or phone at any time. Please don't linger in the lobby or chat with others.



Need More Info (您需要更详细的资料吗)? -

Please email info@WashingtonInternationalSchool.com.

欢迎!

欢迎!

欢迎!



欢迎!

欢迎!

欢迎!